

Paul Gomes – Indiana Packers Corporation
Ed Copeland - Arcadis



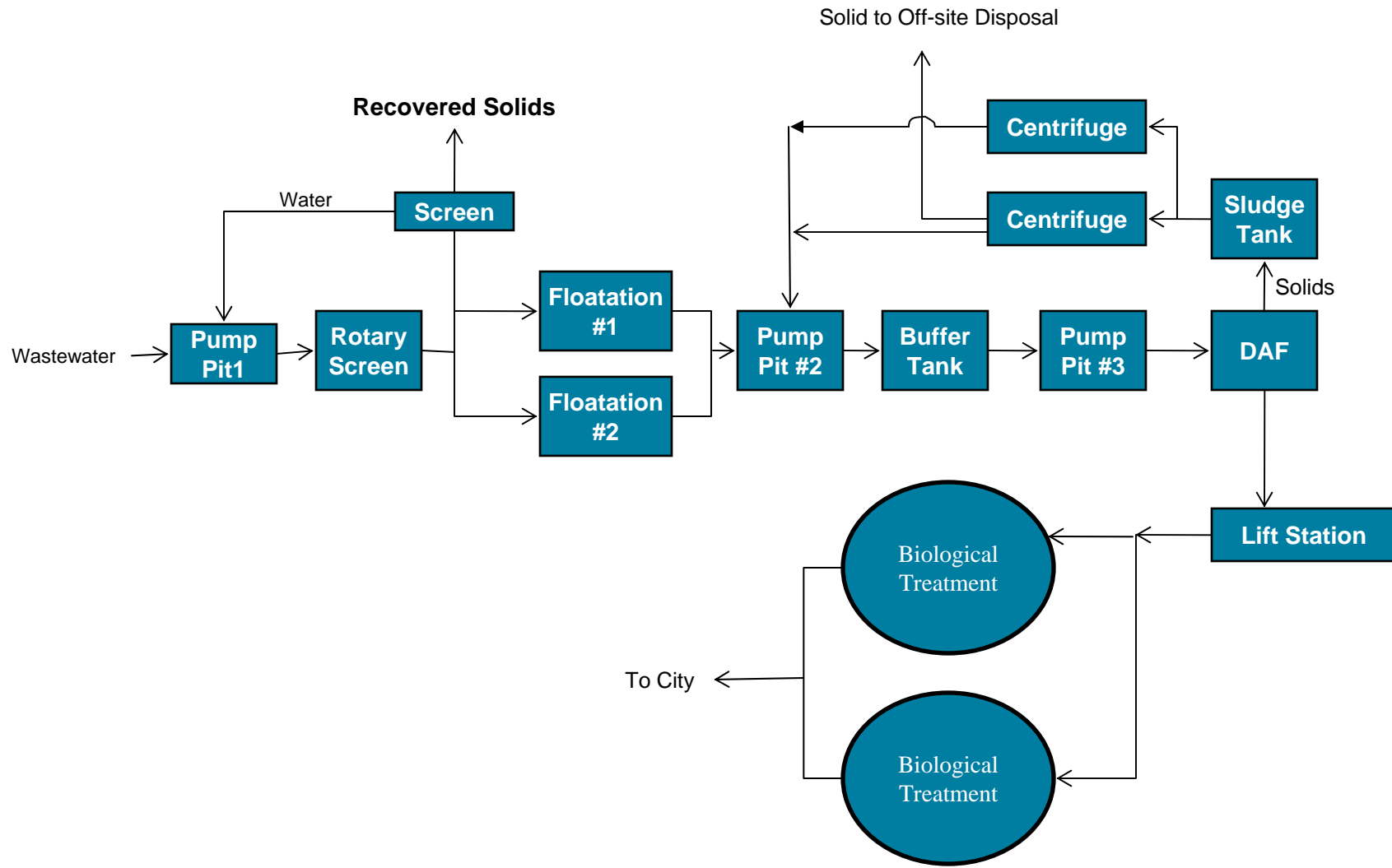
INDIANA PACKERS CORPORATION, DELPHI, IN



- General Overview
 - Slaughter
 - Primary Cut
 - Rendering
- Since 2006
 - Water usage has been reduced by 9%
 - Kill has increased by 14%
- WWTP Discharge
 - Constant
 - To City POTW

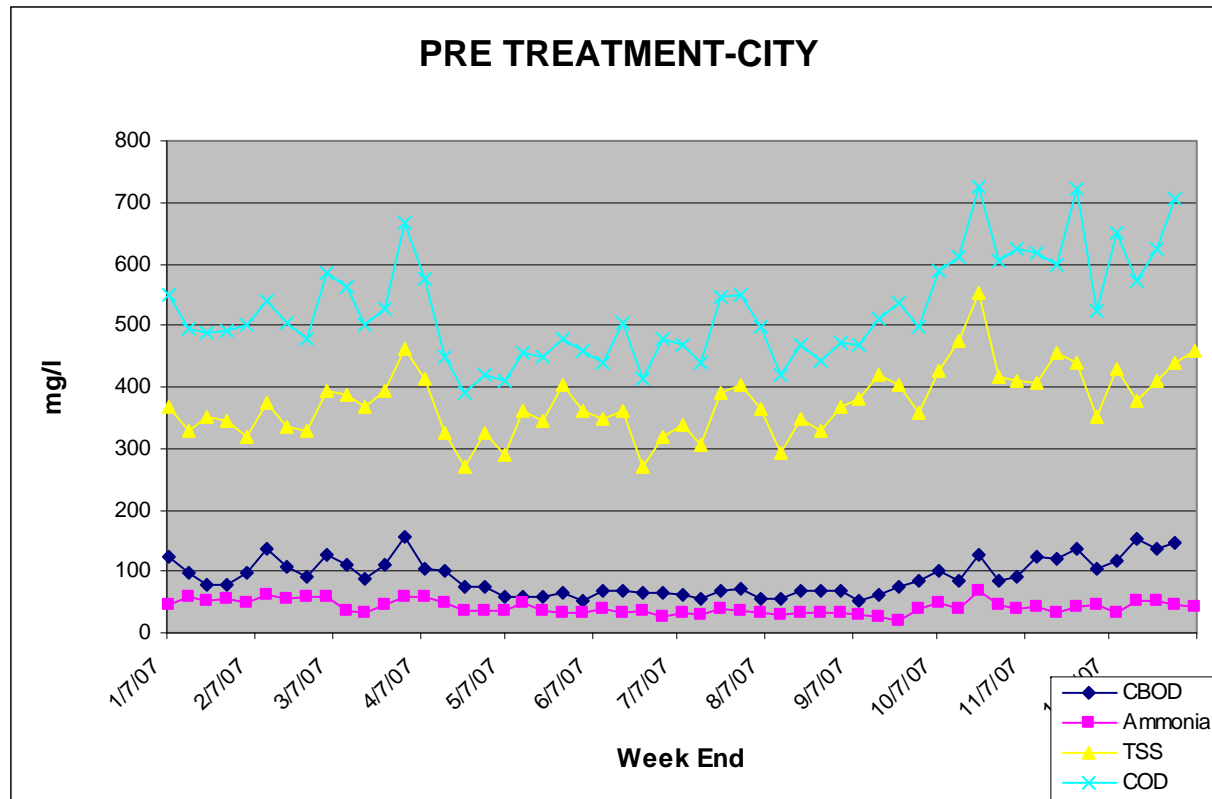


Indiana Packers Simplified Process Flow Diagram





2007 Results





Total Suspended Solids



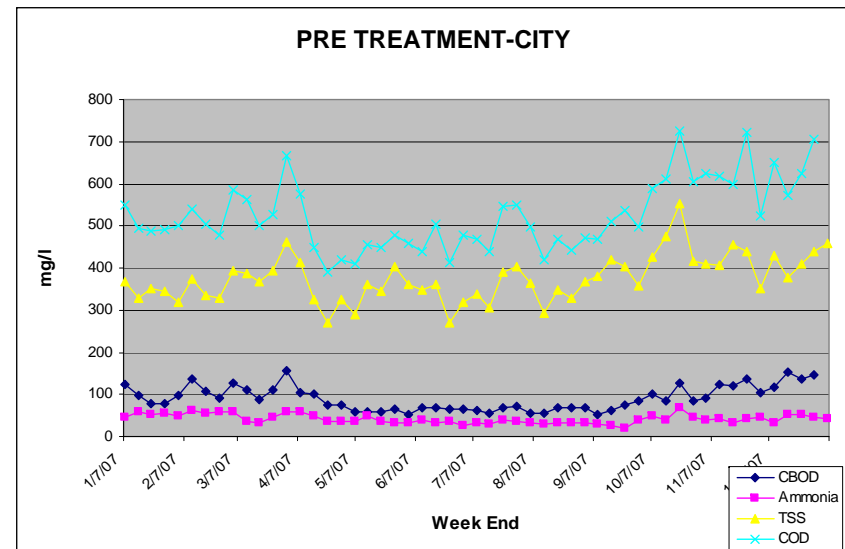
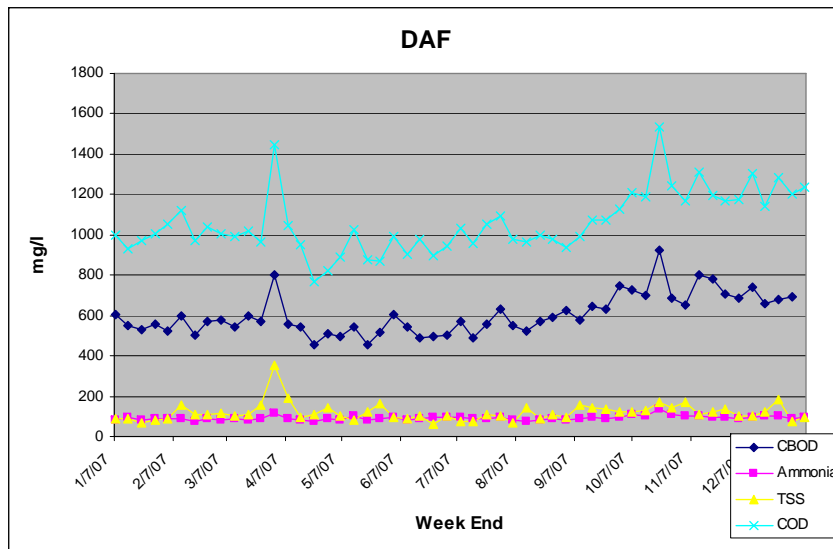
- Slowly Approaching limits for TSS
- What was causing the TSS to Climb
 - Biologicals
 - Retention Time in the Equal. Tanks



2007



DAF vs. City Discharge





pH

- Weekends (Sunday) pH almost 9.0
- Alkalinity instability in the Equal. Tank
 - Carbonates or Sanitation
 - Reaction
 - Time



Total Suspended Solids



- Slowly Approaching limits for TSS
- What was causing the TSS to Climb
 - Biologicals
 - Retention Time in the Equal. Tanks
- Solutions
 - Reduce the BOD₅ coming into WWTP
 - Reduce BOD/TSS coming off the DAF
 - Clean-up Water/Water Re-use



CITY POTW



- Good Working Relations
 - Communications Program
- Approximately 70% of POTW Usage
- Problems – Immediately effect the plant